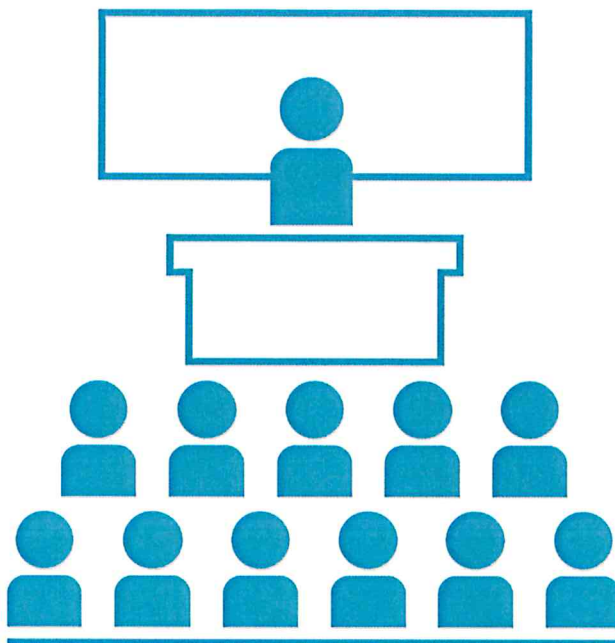




UNIVERSITA' DEGLI STUDI DI CATANIA

Area della Progettazione, dello Sviluppo Edilizio e della Manutenzione



Progettisti aspetti edili e tecnico amministrativi:

geom. orazio arena
arch. barbara carfi
ing. umberto grimaldi
geom. giuseppe mazzeo
arch. eleonora porto

Progettisti aspetti termomeccanici:

ing. giuseppe castrogiovanni
ing. andrea lo giudice

Progettisti aspetti elettrici e speciali:

ing. fabio filippino
dott. francesco la spina
p.i. alessandro molino

Coordinatore della sicurezza in fase di progettazione:

geom. salvatore pulvirenti

Visto: IL RUP

arch. sebastiano pulvirenti

Visto: IL DIRIGENTE

dott. carlo vicarelli



Progetto Aule didattiche Ateneo di Catania

Interventi di manutenzione e arredamento aule

Elaborato
grafico_ARR:

BLOCCO 1 - Ex Monastero dei Benedettini

Data:

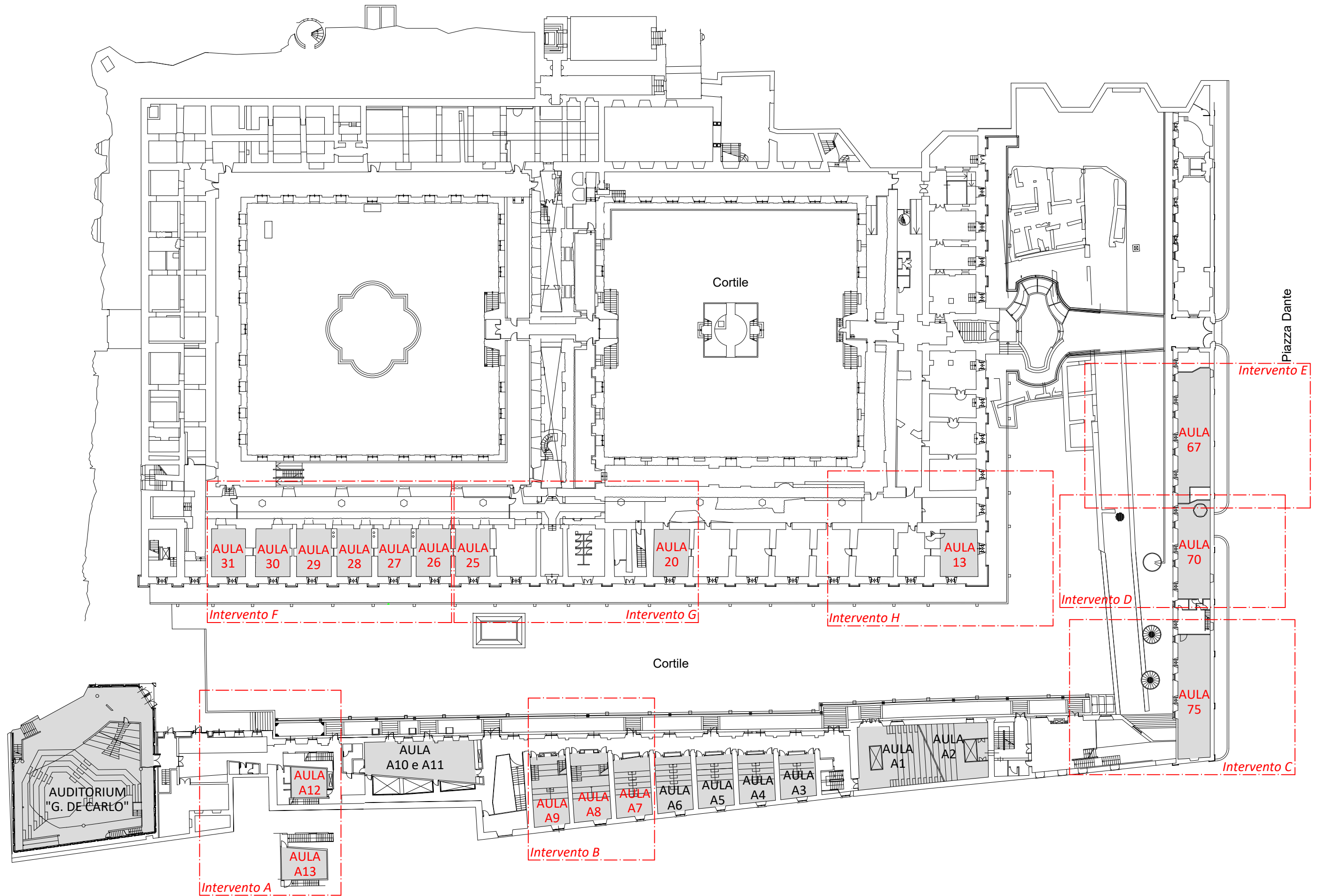
Settembre 2018

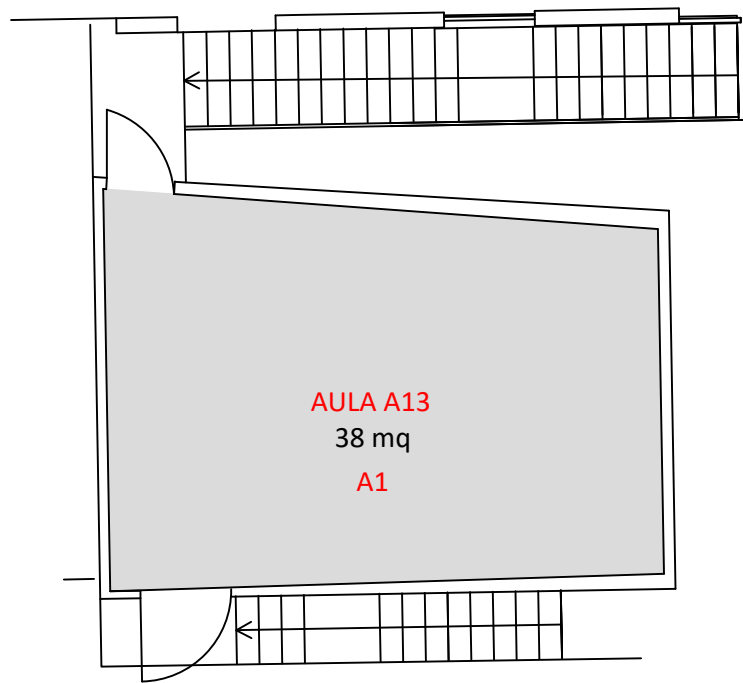
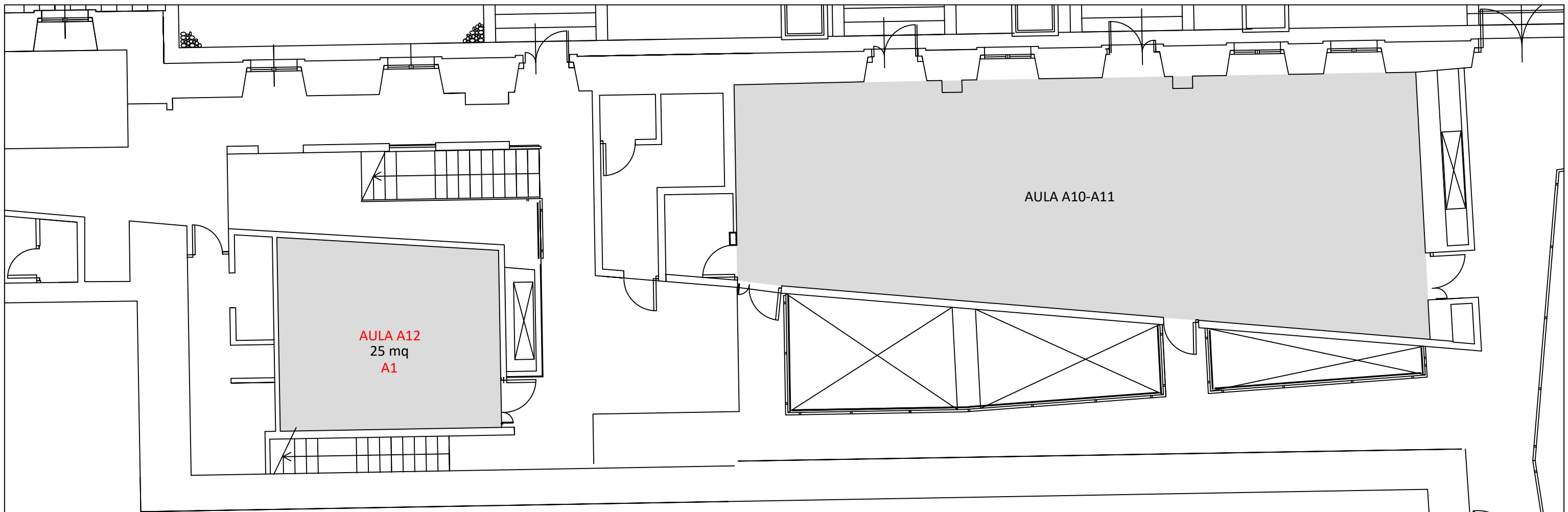
LEGENDA

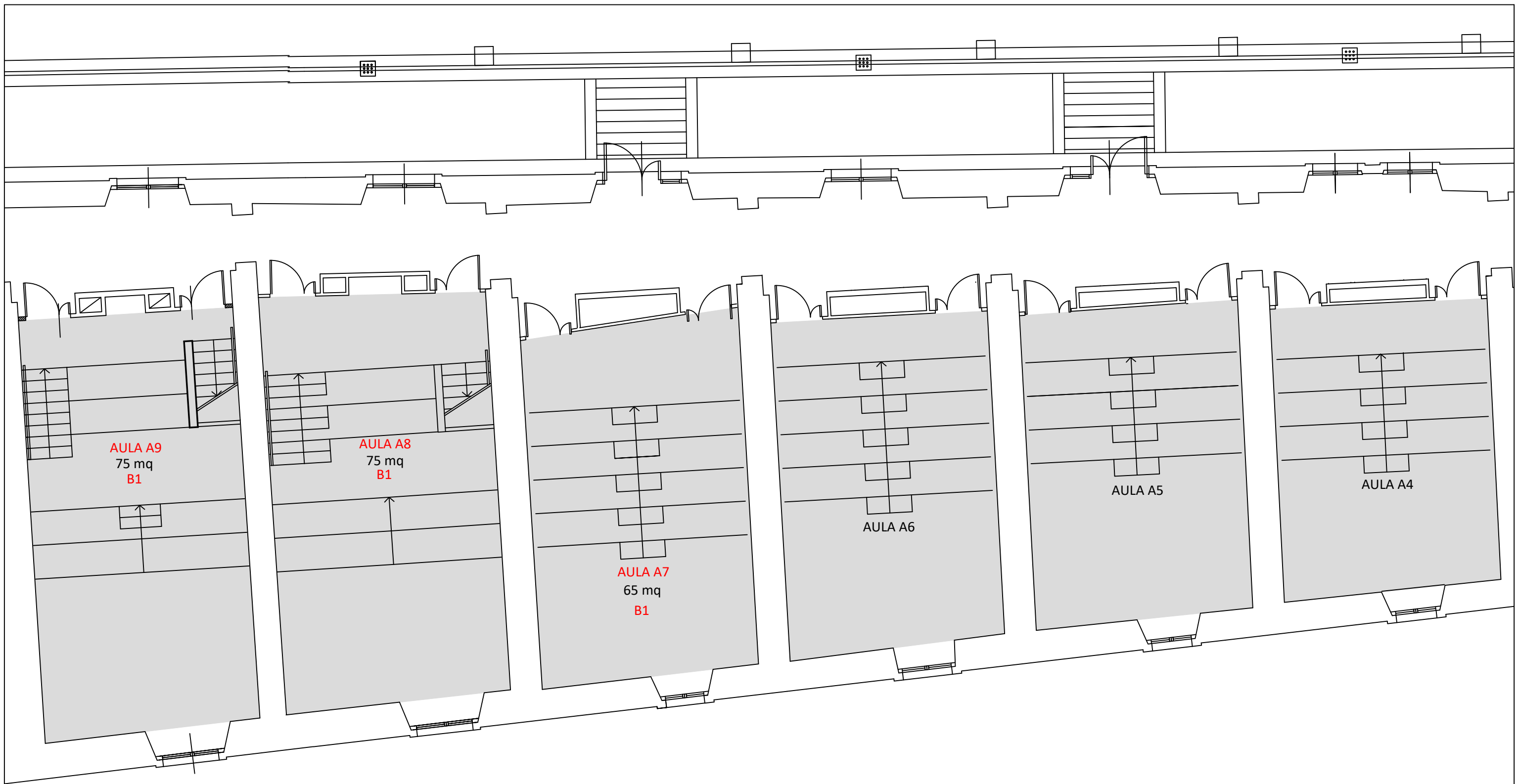
TIPOLOGIA ARREDO STATO DI FATTO

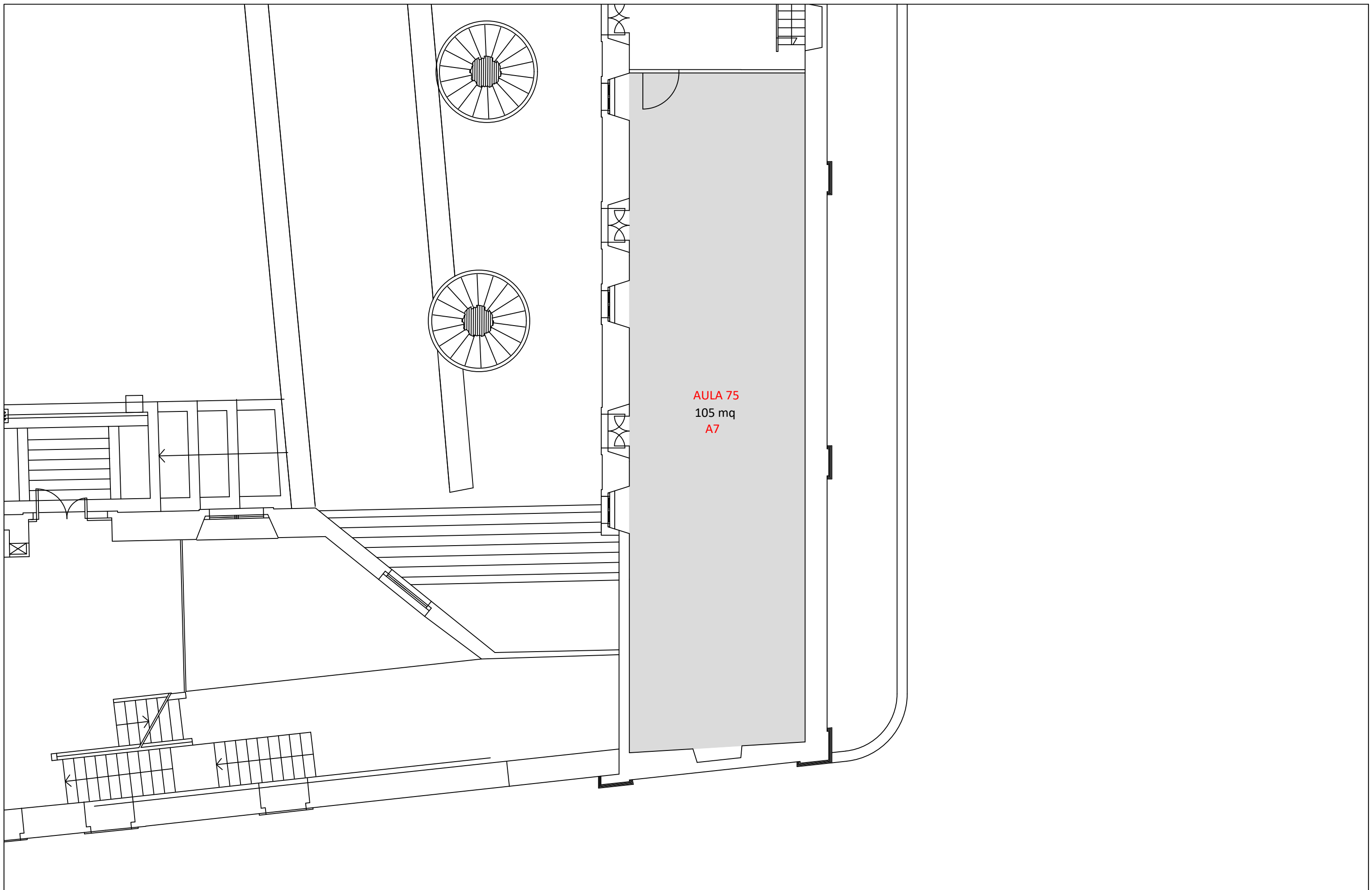
- A** sedute in piano
- B** sedute su gradoni lineari
- C** sedute su gradoni curvi

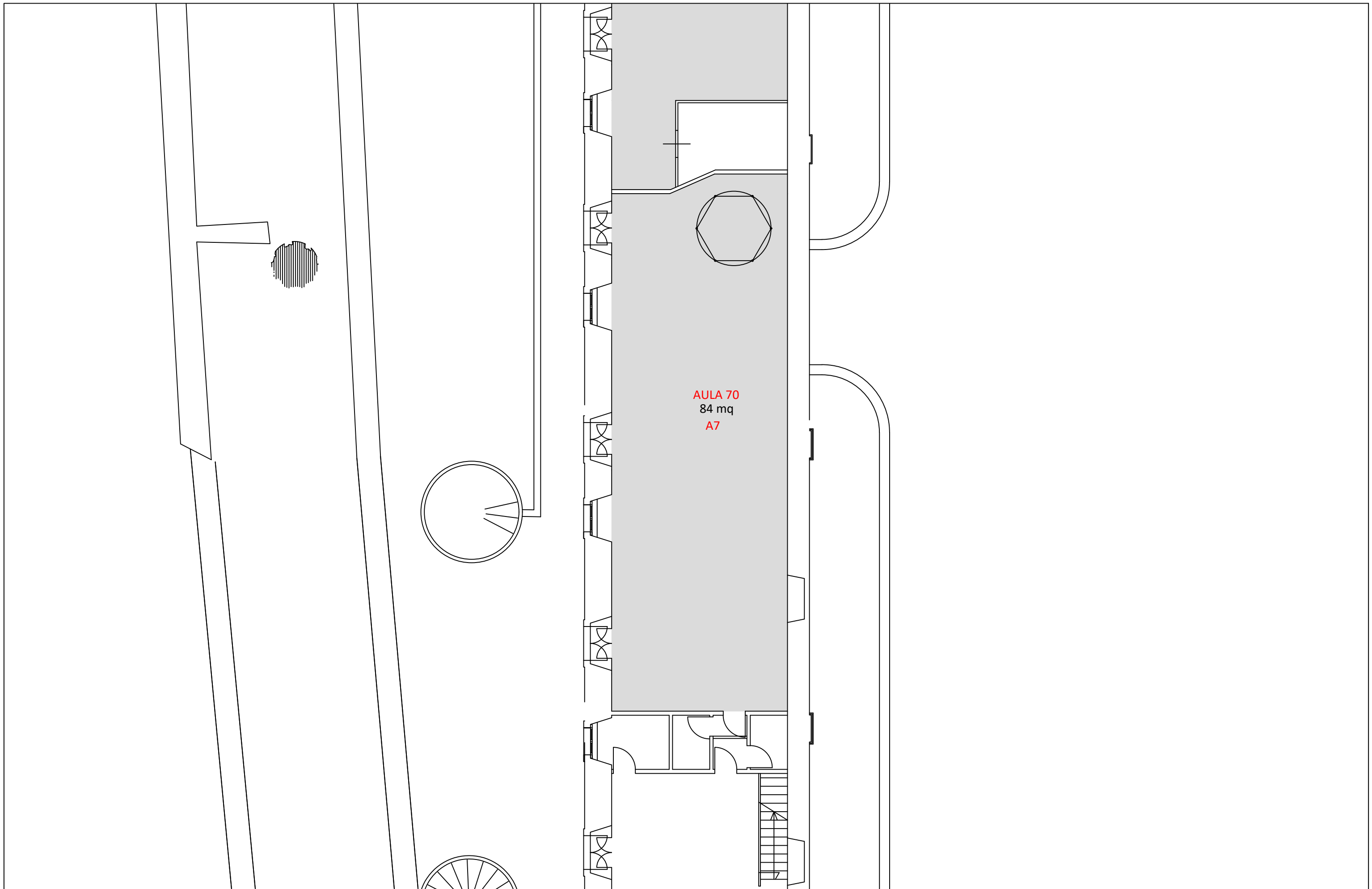
- 1** sedute multiple fisse con banco lavoro
- 2** sedute multiple fisse con ribaltina
- 3** sedute multiple fisse
- 3.a** sedute multiple fisse curve
- 4** sedie singole e tavoli studio
- 5** sedie singole
- 6** sedie multiple non fissate con ribaltina
- 7** sedie singole con ribaltina

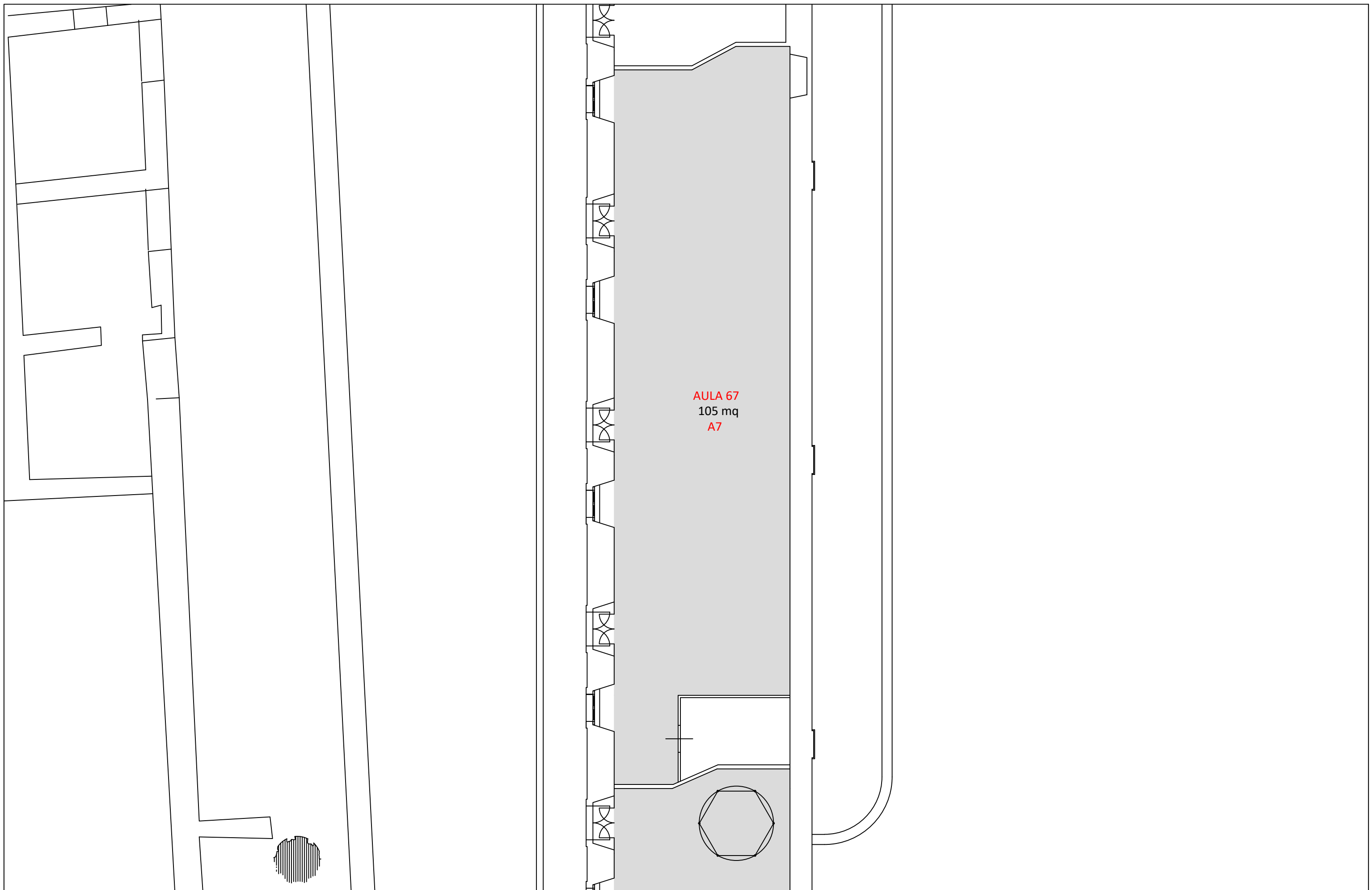


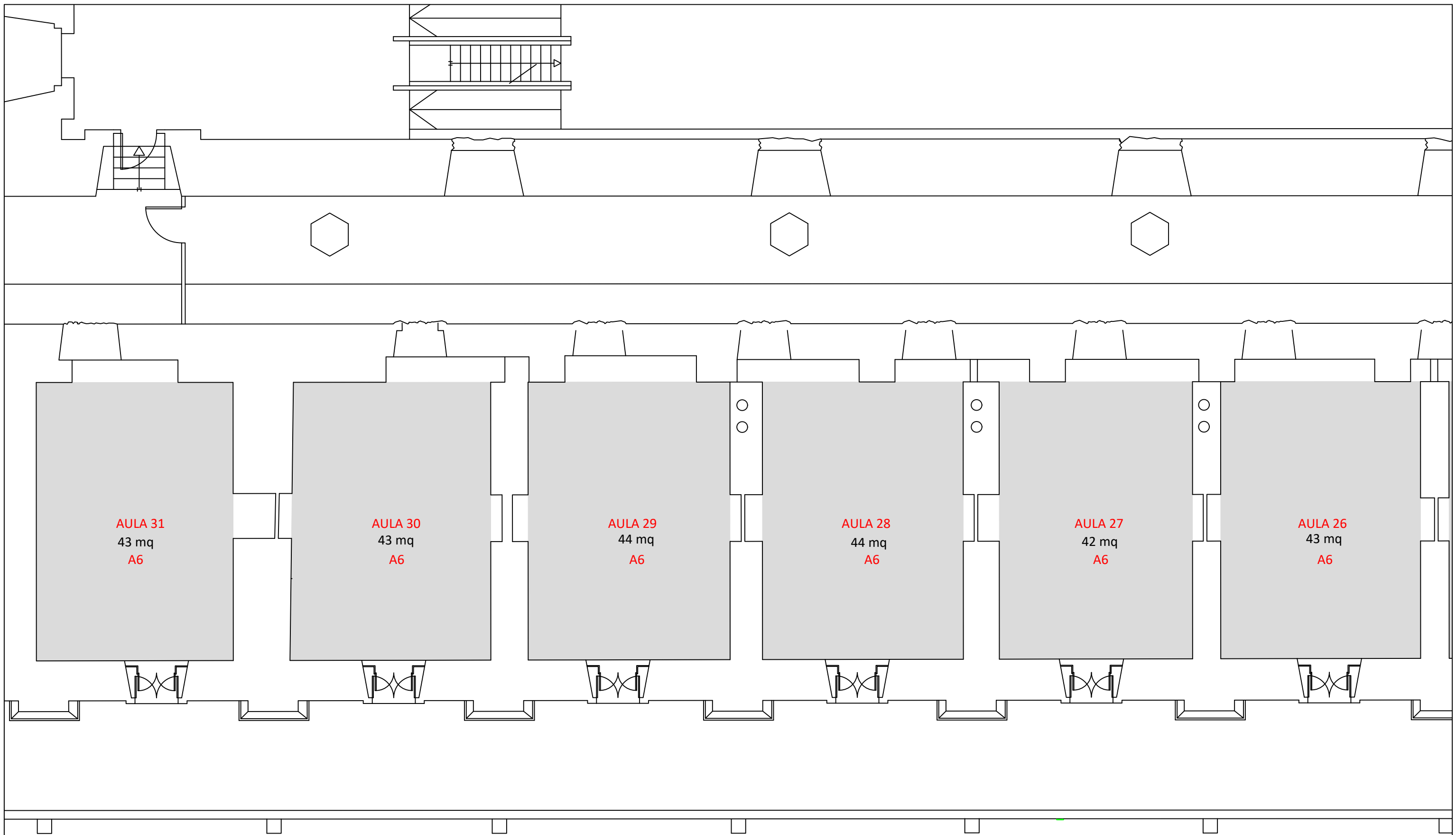


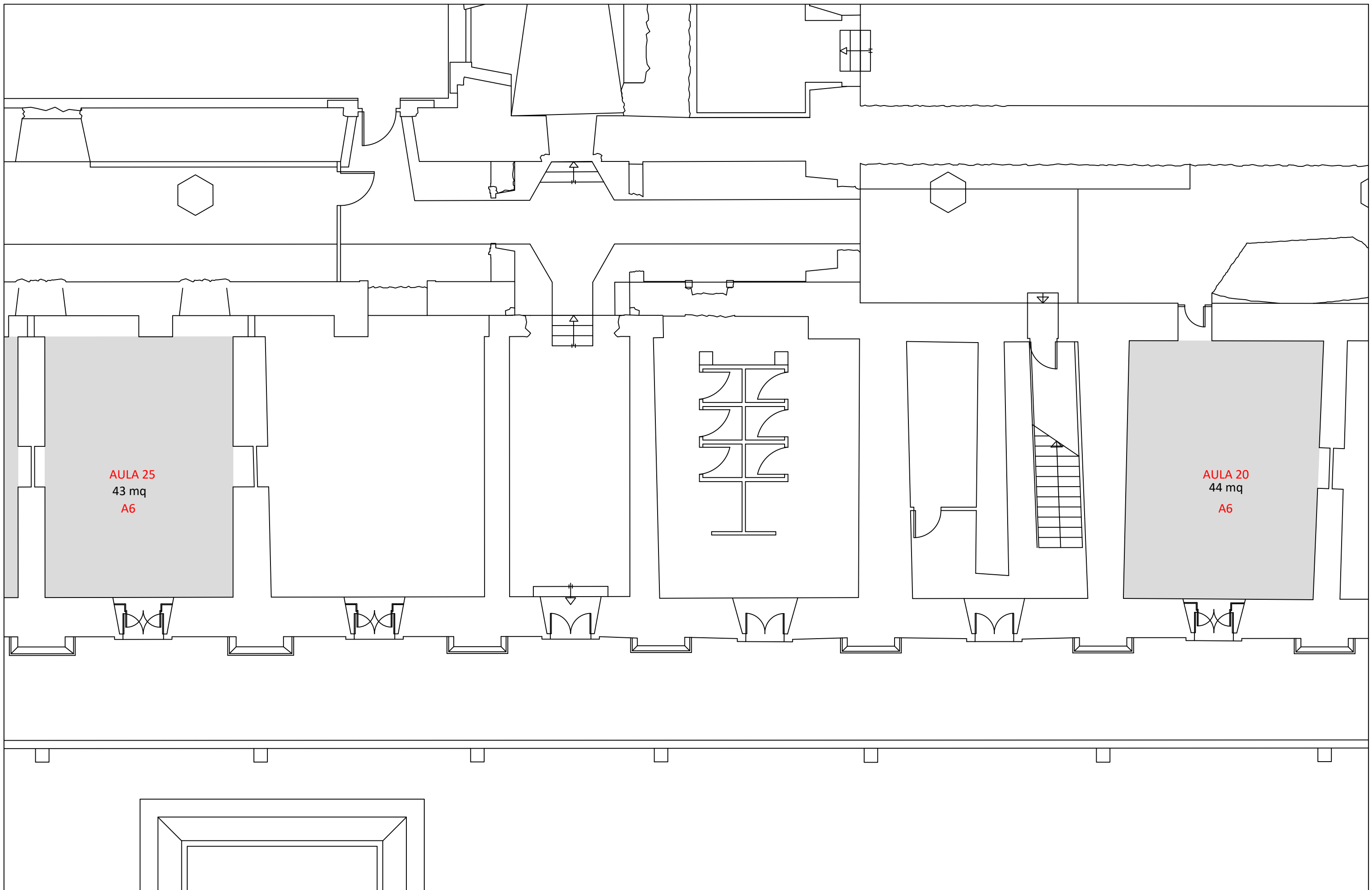








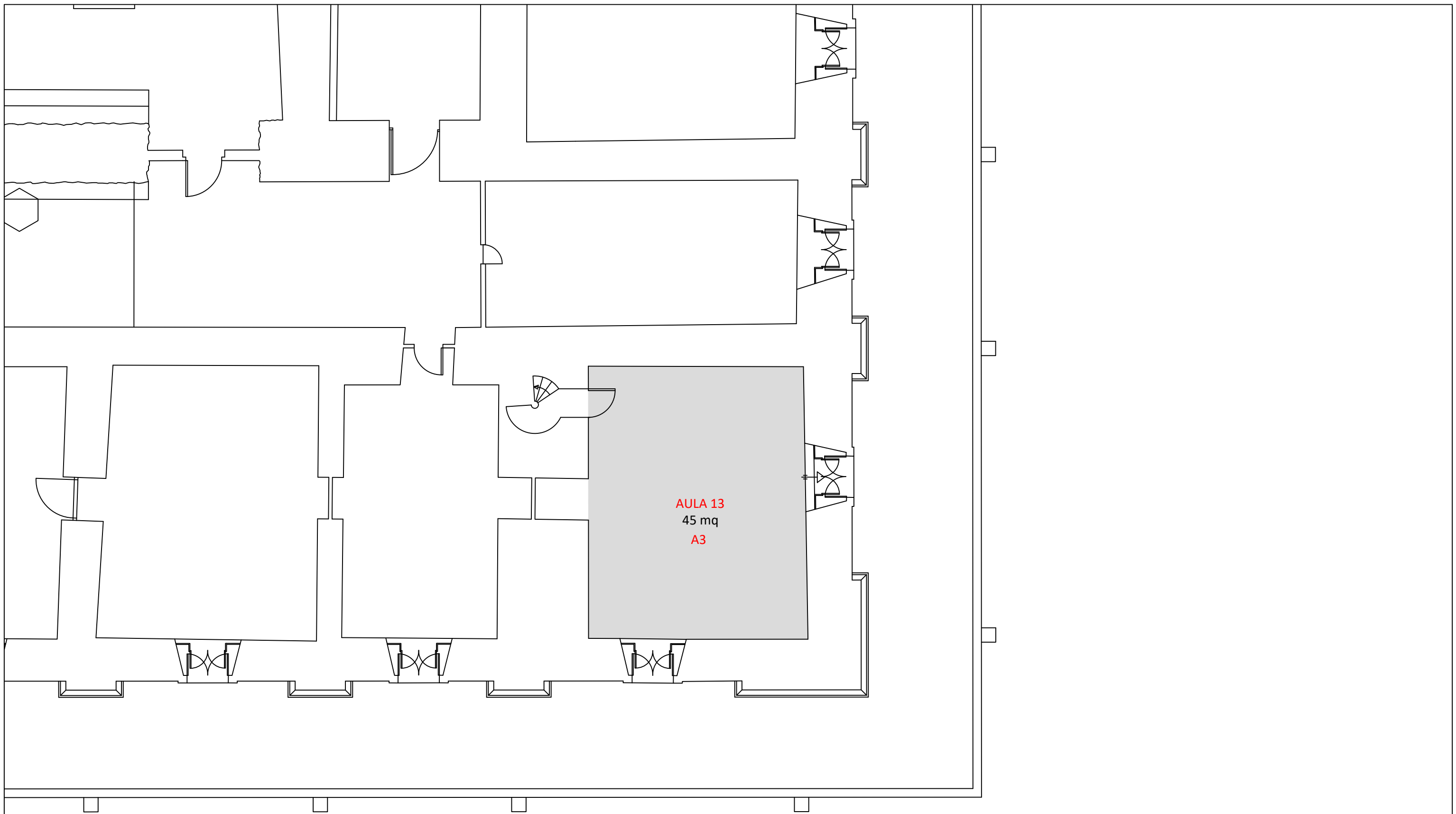


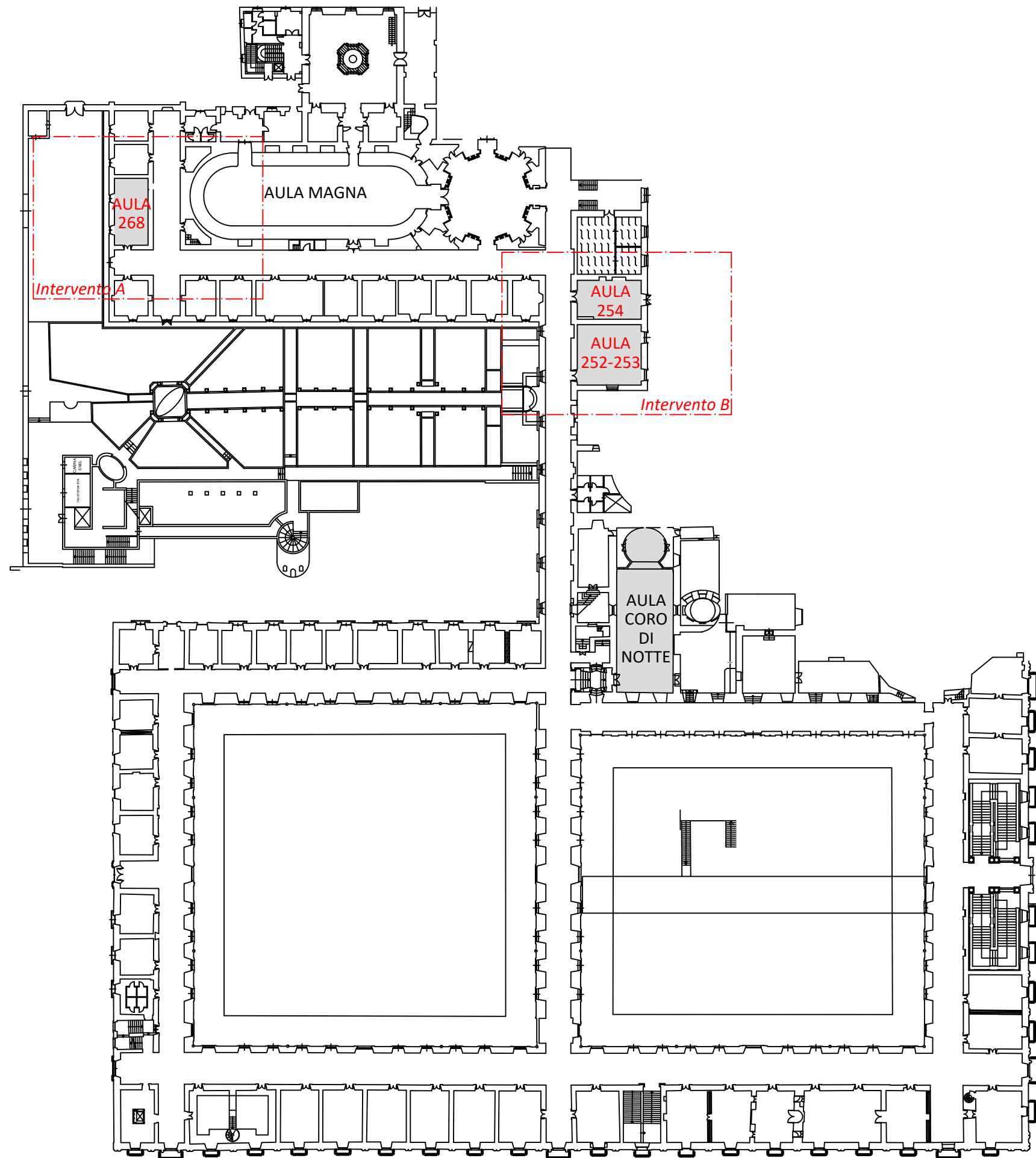


AULA 25
43 mq
A6

AULA 20
44 mq
A6

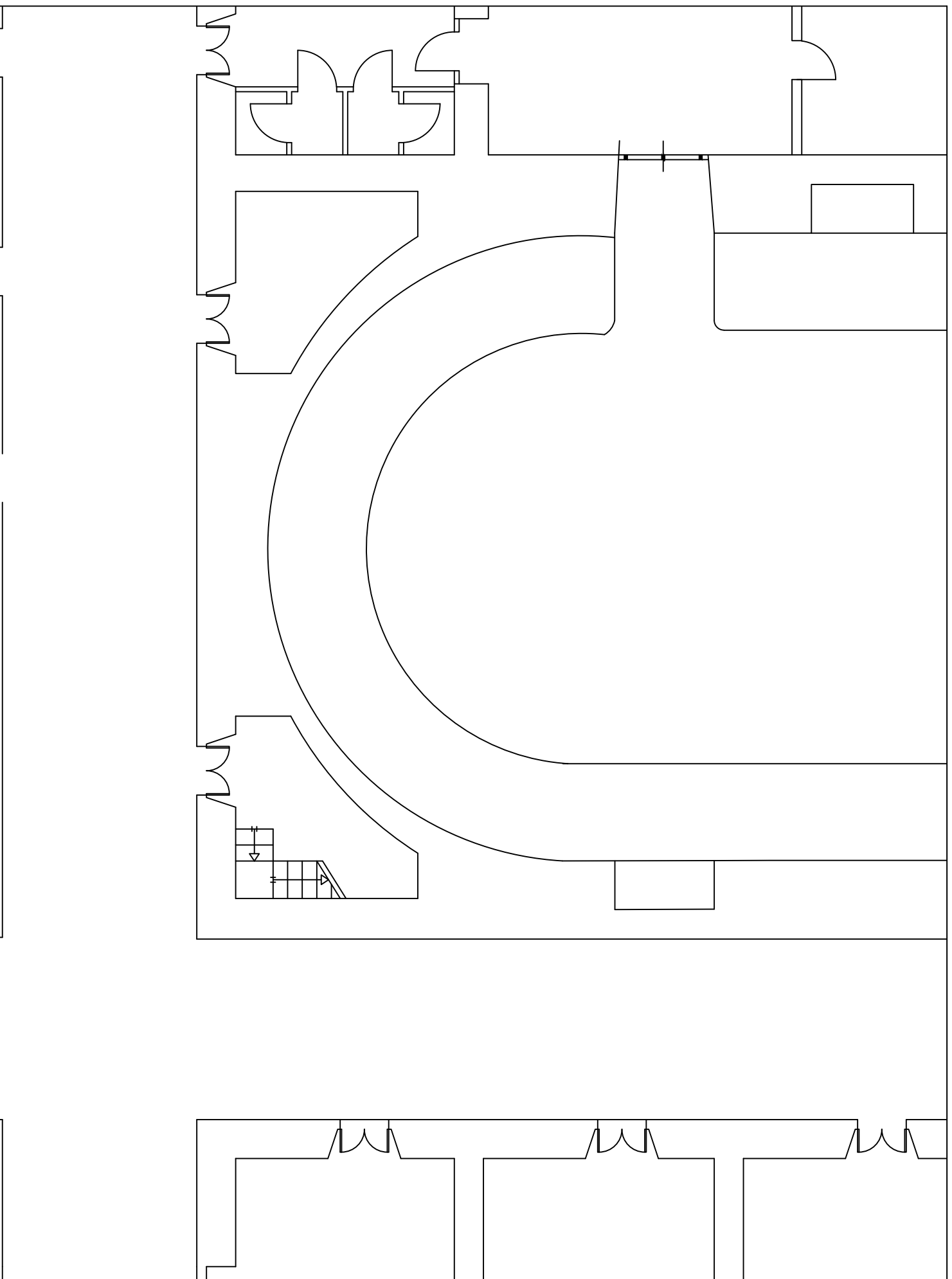
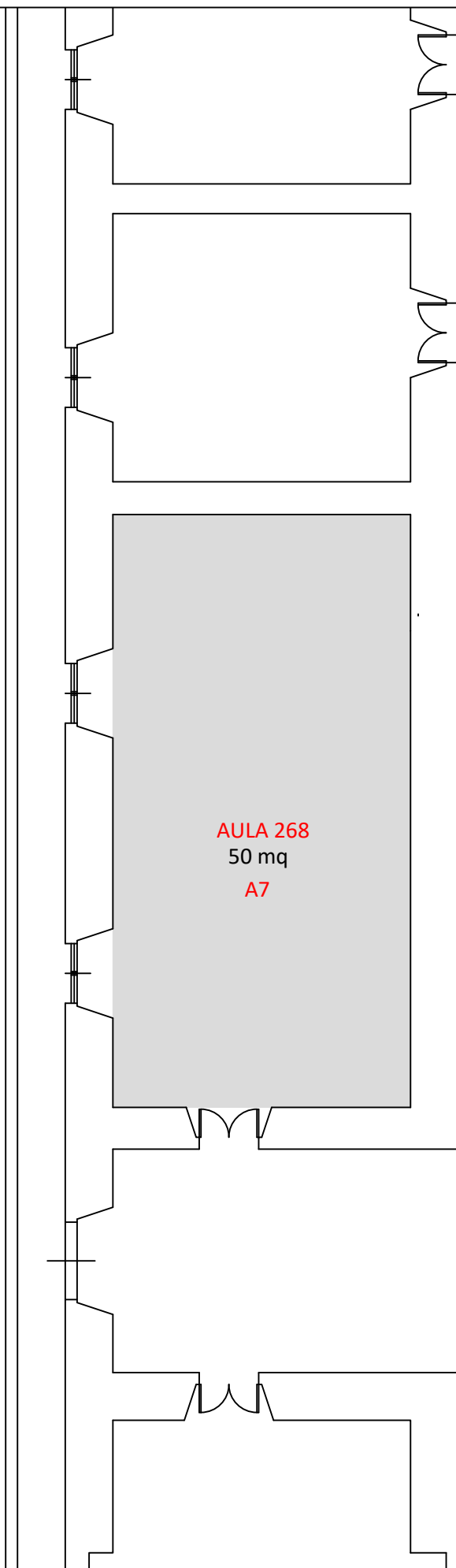
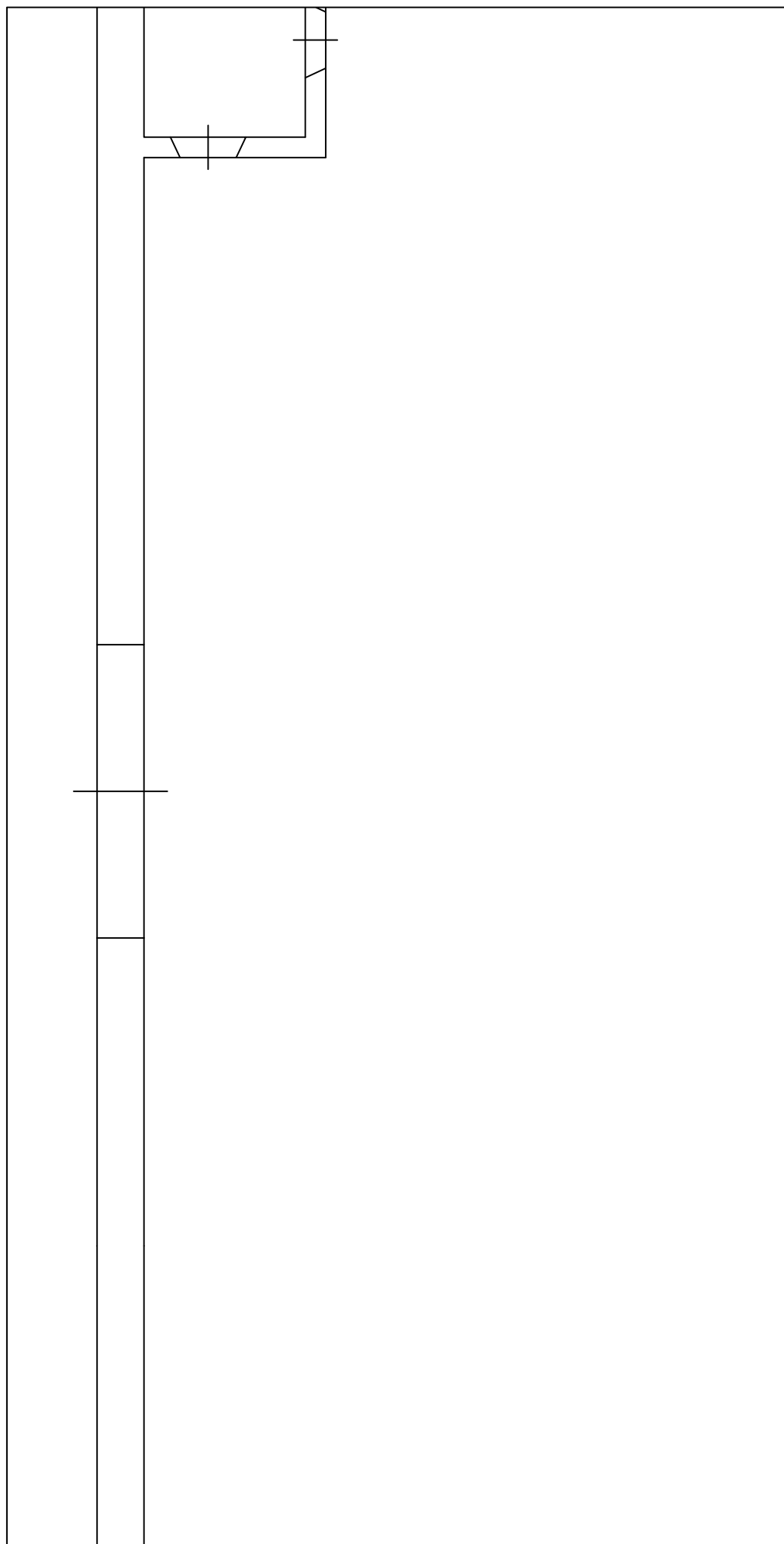


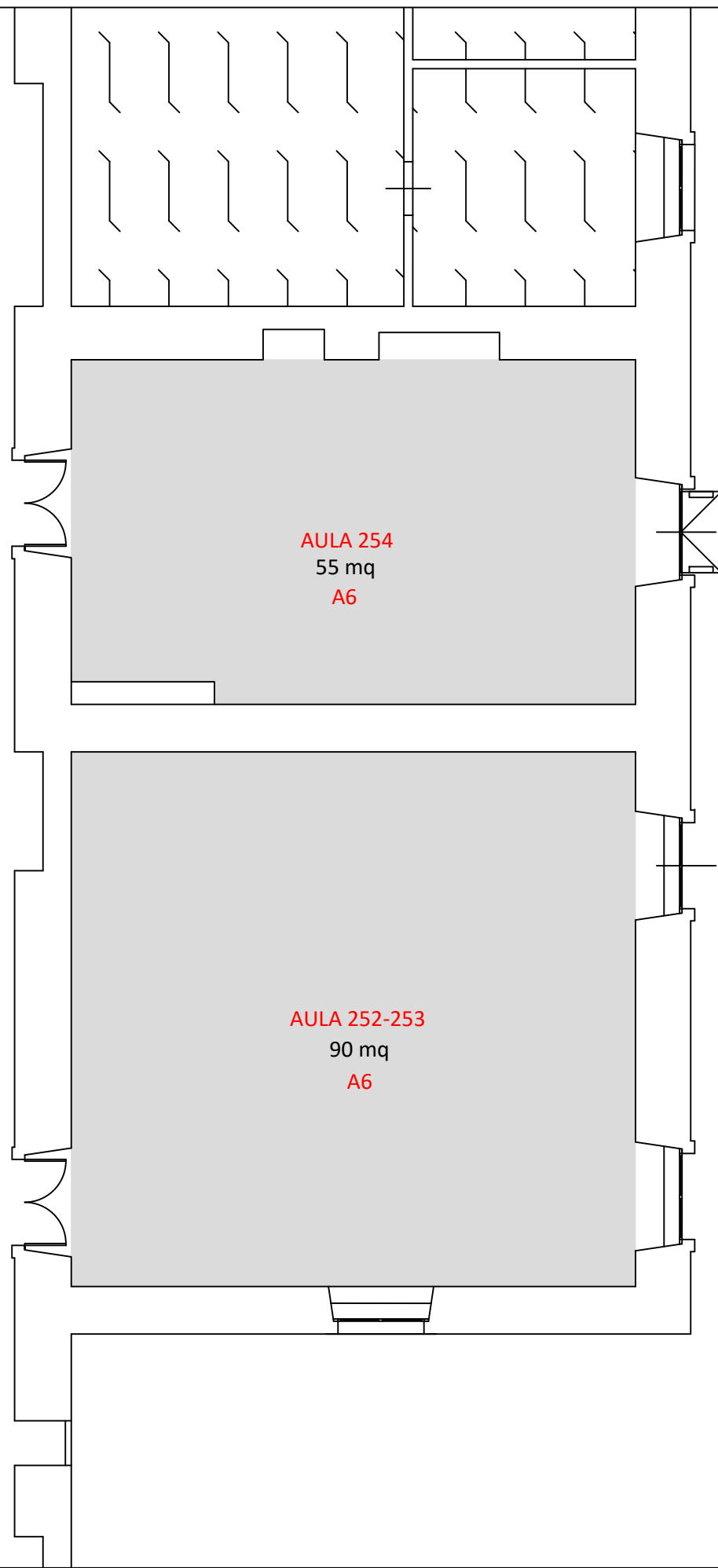
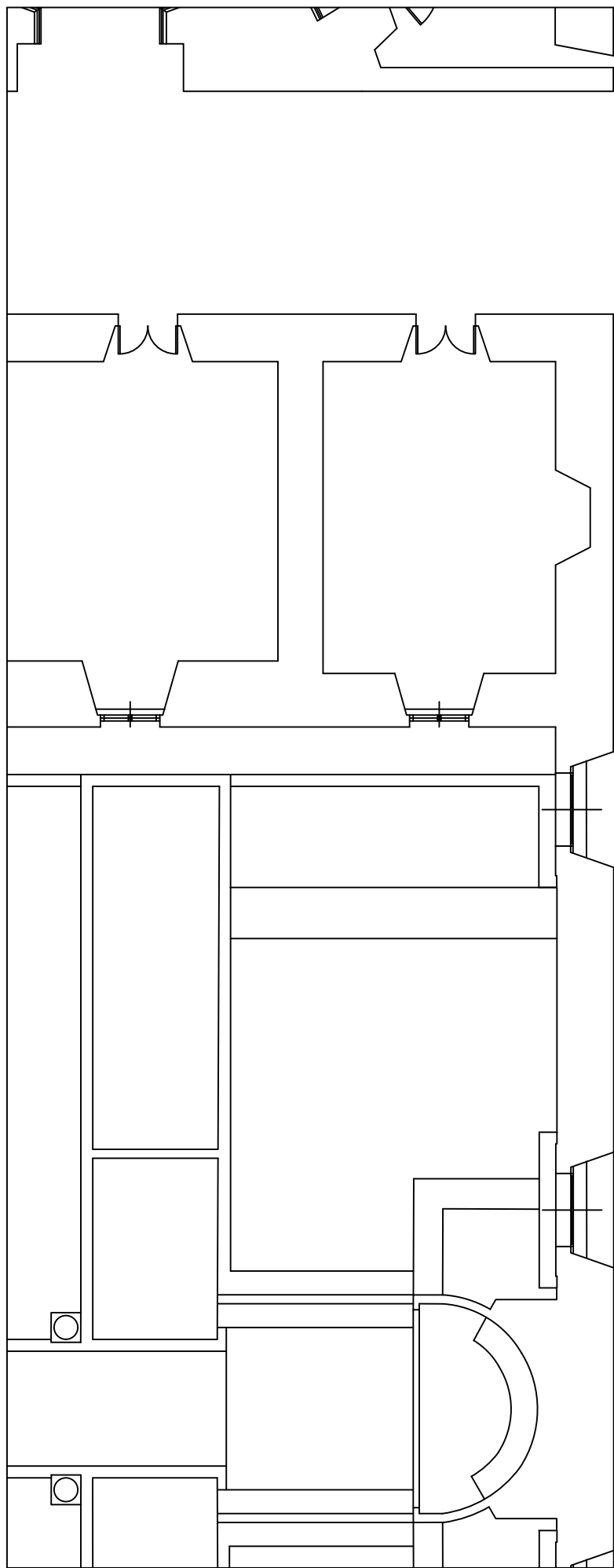




Piazza Dante







AULA 254
55 mq
A6

AULA 252-253
90 mq
A6

